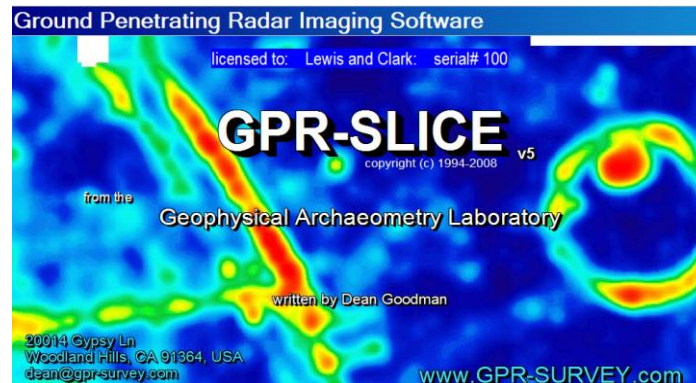


Workshops and training on GPR-SLICE



Basic and advanced workshops on GPR-SLICE v7.0 Ground Penetrating Radar Imaging Software. The two day course is focused on data processing for new users and for those that are already familiar with the basic operations in GPR-SLICE. The cost of the workshop is 300 EUR/person. There are 20-30 places available.

The workshops concentrate on the following topics:

- Signal processing
- Image processing
- Multi-channel data processing
- Open GL operations
- GPS imaging for all the major manufacturers
- Total station navigation
- Ons offset radargram editing
- Automatic topographic corrections (regular surveys and GPS)
- Horizon imaging and layer detection (road layer imaging)
- Concrete imaging, XY decoupled gridding
- Vector imaging (tunnel imaging)

- Auto-hyperbola detection and amplitude mapping (bridgedeck imaging)
- BlueBox Batch Processing, one button operation from raw data to processed 3D volumes
- Introduction to GPR via real time simulation software
- Mosaic noise correction
- Some other advanced analyses

Selected example folders will be used during the processing workshop. These example folders will be distributed at the workshop. All attendees must bring their own notebook computers as well as their own software installation with the latest GPR-SLICE update (in case they are already users). Computers with NVIDIA graphic cards is recommended or with graphic cards from ATI that have their latest drivers installed is fine. Notebooks with just integrated graphic chip cards is not recommended.

For additional information on the next workshop, please contact Alex Novo alexново@gpr-slice.es

On-site training is available at 1200 EUR/day plus travel and accommodation fees.

Additional training is also offered via Skype at 60 EUR/h.

